

SWEP Basic Product Presentation

BPHEs for Heating



E5AS

Dimensions:
72 x 187 mm
2.84 x 7.45 in



E5T

Dimensions:
72 x 187 mm
2.84 x 7.45 in



B5

Dimensions:
72 x 187 mm
2.84 x 7.45 in



E8T

Dimensions:
73 x 315 mm
2.84 x 7.45 in



B8T

Dimensions:
72 x 310 mm
2.84 x 7.45 in



B10T

Dimensions:
117/119 x 287/289
mm, 4.61/4.68 x
11.31/11.37 in



B12

Dimensions:
117 x 287 mm
4.61 x 11.31 in



B15

Dimensions:
72 x 465 mm
2.84 x 18.32 in



B16

Dimensions:
119 x 376 mm
4.69 x 14.8 in



B16DW

Dimensions:
119 x 377 mm
4.69 x 14.85 in



B25T V25T

Dimensions:
117/119 x 524/526
mm
4.61/4.68 x
20.65/20.71 in



B28

Dimensions:
119 x 526 mm
4.69 x 20.72 in



B80 V80 P80 Q80

Dimensions:
119 x 526 mm
4.69 x 20.72 in



B35

Dimensions:
243 x 393 mm
9.57 x 15.48 in



B56

Dimensions:
243 x 525 mm
9.57 x 20.69 in



B57

Dimensions:
243 x 693 mm
9.57 x 27.30 in



B60

Dimensions:
364 x 374 mm
14.34 x 14.74 in



B120T

Dimensions:
243 x 525 mm
9.50 x 20.65 in



B427

Dimensions:
304 x 694 mm
11.97 x 27.32 in



B439

Dimensions:
304 X 979 mm
38.57 x 11.98 in



B649

Dimensions:
1232 mm x 537 mm
48.5 x 21.14

BPHEs for A/C



V10T

Dimensions:
119 x 289 mm
4.61/4.68 x
11.31/11.37 in



V25T

Dimensions:
117/119 x
524/526 mm
4.61/4.68 x
20.65/20.71 in



B60

Dimensions:
364 x 374 mm
14.34 x 14.74 in



V65

Dimensions:
363 x 864 mm
14.29 x 34.02 in



V80 P80 F80

Dimensions:
119 x 526 mm
4.69 x 20.72 in



V120T P120T F120T

Dimensions:
243 x 525 mm
9.50 x 20.65 in



V200T P200T F200T

Dimensions:
243 x 525 mm
9.50 x 20.65 in



DB200 DV200 DP200

Dimensions:
243 x 525 mm
9.57 x 20.69 in



DP300 DB300

Dimensions:
238 x 520 mm
9.37 x 20.47 in



DP700

Dimensions:
302 x 725 mm
11.89 x 28.54 in



B400T V400T P400T S400T VH400T

Dimensions:
304 x 694 mm
11.98 x 27.34 in



DB400 DS400 DV400 DP400

Dimensions:
304 x 694 mm
11.98 x 27.34 in



B439

Dimensions:
304 X 979 mm
38.57 x 11.98 inch



B500T S500T VH500T

Dimensions:
304 x 980 mm
11.98 x 38.59 in



DB500 DS500

Dimensions:
304 x 980 mm
11.98 x 38.59 in

BPHEs for Refrigeration



B5

Dimensions:
72 x 187 mm
2.84 x 7.45 inch



B8T

Dimensions:
72 x 187 mm
2.84 x 7.45 in



BX8T

Dimensions:
73 x 315 mm
2.87 x 12.4 in



B9

Dimensions:
72 x 310 mm
2.84 x 7.45 inch



B10T V10T

Dimensions:
117/119 x 287/289
mm, 4.61/4.68 x
11.31/11.37 in



B12

Dimensions:
117 x 287 mm
4.61 x 11.31 in



B15

Dimensions:
72 x 465 mm
2.84 x 18.32 in



B16 B16DW

Dimensions:
119 x 376 mm
4.69 x 14.8 inch



B16DW-U

Dimensions:
119 x 376 mm
4.69 x 14.8 inch



B17

Dimensions:
377 mm x 119.5
mm
14.84 x 4.7



B25T V25T

Dimensions:
117/119 x
524/526 mm
4.61/4.68 x
20.65/20.71 in



B35 V35

Dimensions:
243 x 393 mm
9.57 x 15.48 in



B60

Dimensions:
364 x 374 mm
14.34 x 14.74 in



B80 V80 F80

Dimensions:
119 x 526 mm
4.69 x 20.72 in



B120T V120T F120T

Dimensions:
243 x 525 mm
9.50 x 20.65 in



B200T V200T F200T

Dimensions:
243 x 525 mm
9.50 x 20.65 in



B400T V400T S400T F400T

Dimensions:
304 x 694 mm
11.98 x 27.34 in



DS400

Dimensions:
304 x 694 mm
11.98 x 27.34 in



DS500

Dimensions:
304 x 980 mm
11.98 x 38.59 in



B500T VH500T S500T

Dimensions:
304 x 980 mm
11.98 x 38.59 in

CO₂ range

- Our complete CO₂ range is optimized for environmentally friendly systems, and provides energy savings, reliability and a smaller footprint. Our product ranges operate within these specific pressure classes:



U-class

- **U-class**
 - For applications operating up to 140 bar at 135 °C.
 - Suitable for use as a gas cooler, evaporator, economizer or oil cooler in CO₂ trans-critical applications.
 - Products: B16DW, B17 and B9
- **D-class**
 - For applications operating at 60 bar at up to 100 °C.
 - Suitable for use as an evaporator, condenser or suction gas heat exchanger and for cascade operations.
 - Products: 12H and 25H
- **E-class**
 - For sub-critical applications operating at 56 bar at up to 100 °C.
 - Suitable for use as an evaporator or condenser and for cascade operations.
 - Products: 120TH and 400H



D-class



E-class

BPHEs for Industry



B8T

Dimensions:
72 x 310 mm
2.84 x 7.45 inch



B10T

Dimensions:
117/119 x 287/289 mm
4.61/4.68 x 11.31/11.37 inch



B12

Dimensions:
117 x 287 mm
4.61 x 11.31 inch



B15

Dimensions:
72 x 465 mm
2.84 x 18.32 inch



B16

Dimensions:
119 x 376 mm
4.69 x 14.8 inch



B16DW

Dimensions:
119 x 377 mm
4.69 x 14.85 in



B25T

Dimensions:
117/119 x 524/526 mm
4.61/4.68 x 20.65/20.71 in



B28

Dimensions:
119 x 526 mm
4.69 x 20.72 inch



B35

Dimensions:
243 x 393 mm
9.57 x 15.48 inch



B50

Dimensions:
243 x 525 mm
9.57 x 20.62 inch



B56

Dimensions:
243 x 525 mm
9.57 x 20.69 inch



B60

Dimensions:
364 x 374 mm
14.34 x 14.74 inch



B80

Dimensions:
119 x 526 mm
4.69 x 20.72 in



B120T

Dimensions:
243 x 525 mm
9.50 x 20.65 inch



DB200

Dimensions:
243 x 525 mm
9.57 x 20.69 inch



B200T

Dimensions:
243 x 525 mm
9.50 x 20.65 in



DB400

Dimensions:
304 x 694 mm
11.98 x 27.34 inch



B427

Dimensions:
304 x 694 mm
11.97 x 27.32 inch



B500T

Dimensions:
304 x 980 mm
11.98 x 38.59 in



B649

Dimensions:
1232 mm x 537 mm
48.5 x 21.14

BPHEs for District Energy



E5T

Dimensions:
72 x 187 mm
2.84 x 7.45 inch



E6T

Dimensions:
73 x 210 mm
2.87 x 8.27 in



E8T

Dimensions:
73 x 315 mm
2.84 x 7.45 inch



B10T

Dimensions:
117/119 x 287/289
mm, 4.61/4.68 x
11.31/11.37 inch



B12

Dimensions:
117 x 287 mm
4.61 x 11.31 inch



B16

Dimensions:
119 x 376 mm
4.69 x 14.8 inch



B15

Dimensions:
72 x 465 mm
2.84 x 18.32 in



B16DW

Dimensions:
119 x 377 mm
4.69 x 14.85 inch



B28

Dimensions:
119 x 526 mm
4.69 x 20.72 in



B35

Dimensions:
243 x 393 mm
9.57 x 15.48 in



B50

Dimensions:
243 x 525 mm
9.57 x 20.62 inch



B56

Dimensions:
243 x 525 mm
9.57 x 20.69 in



B60

Dimensions:
364 x 374 mm
14.34 x 14.74 in



B65

Dimensions:
363x 864 mm
14.29 x 34.02 in



B120T

Dimensions:
243 x 525 mm
9.50 x 20.65 in



B427

Dimensions:
304 x 694 mm
11.97 x 27.32 in



B439

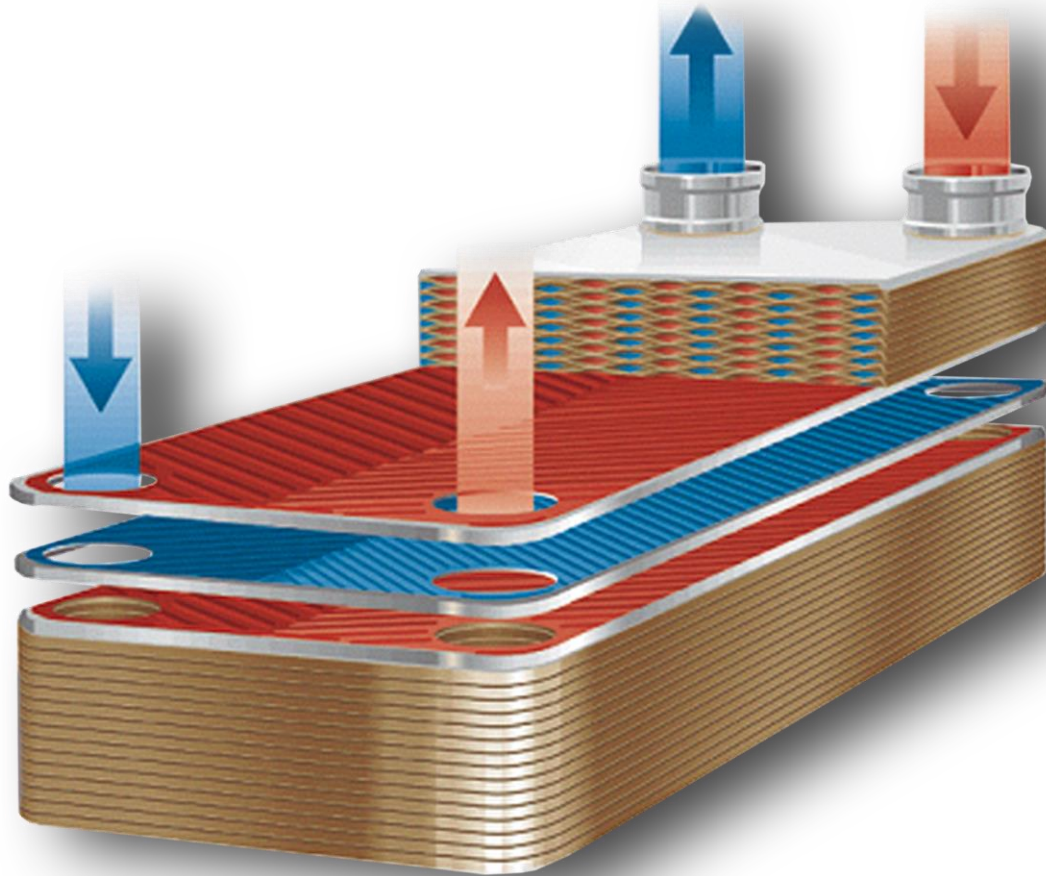
Dimensions:
304 X 979 mm
38.57 x 11.98 in



B649

Dimensions:
1232 mm x 537 mm
48.5 x 21.14

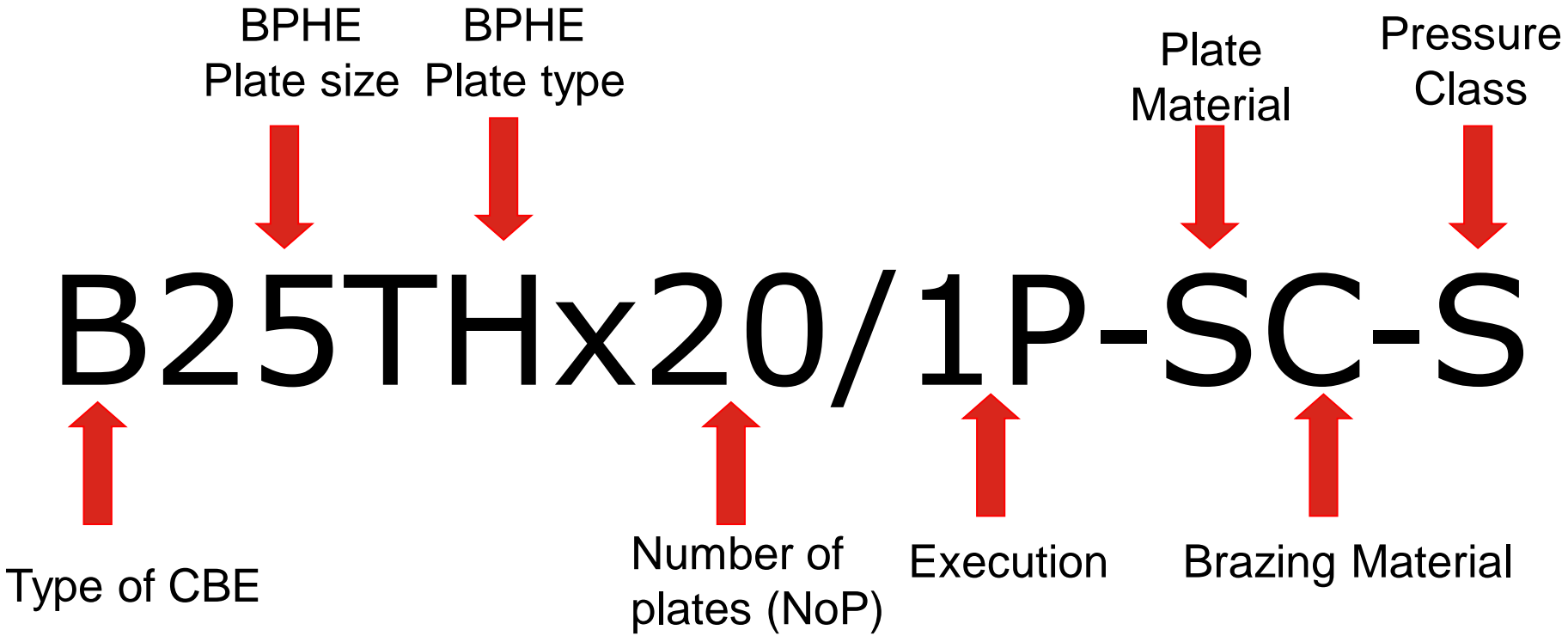
How a BPHE works



BPHE Construction



Denomination



B-type

- Brazing
- Wide range
- Parent



Ex. **B**25THx20/1P-SC-S

V-type

- Vapor
- Distribution ring
- R407C



Ex. **V**25THx20/1P-SC-S

P-type

- R410A
- Kyoto protocol

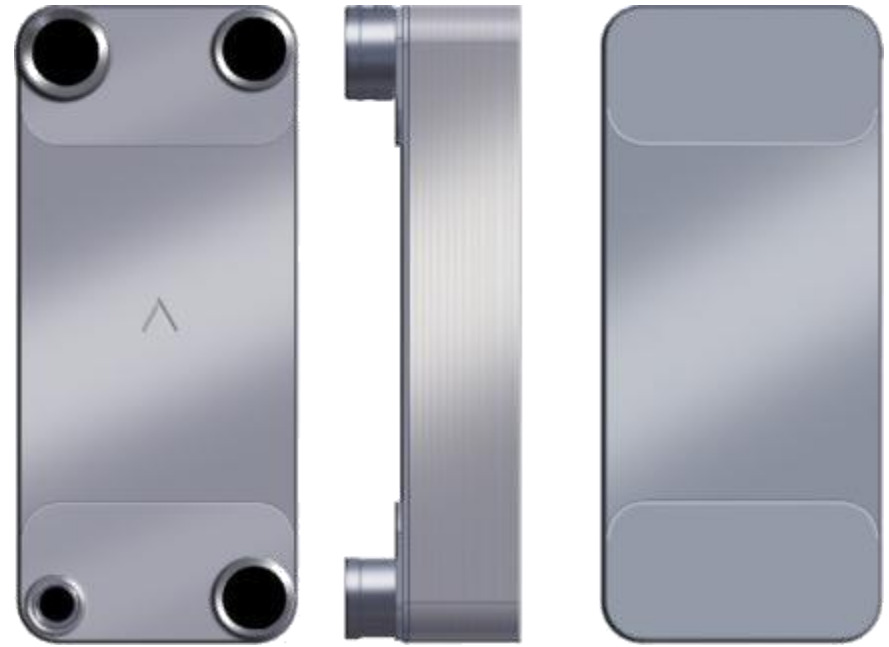


P80

Ex. **P**80Hx20/1P-SC-S

S-type

- R134a
- Kyoto protocol

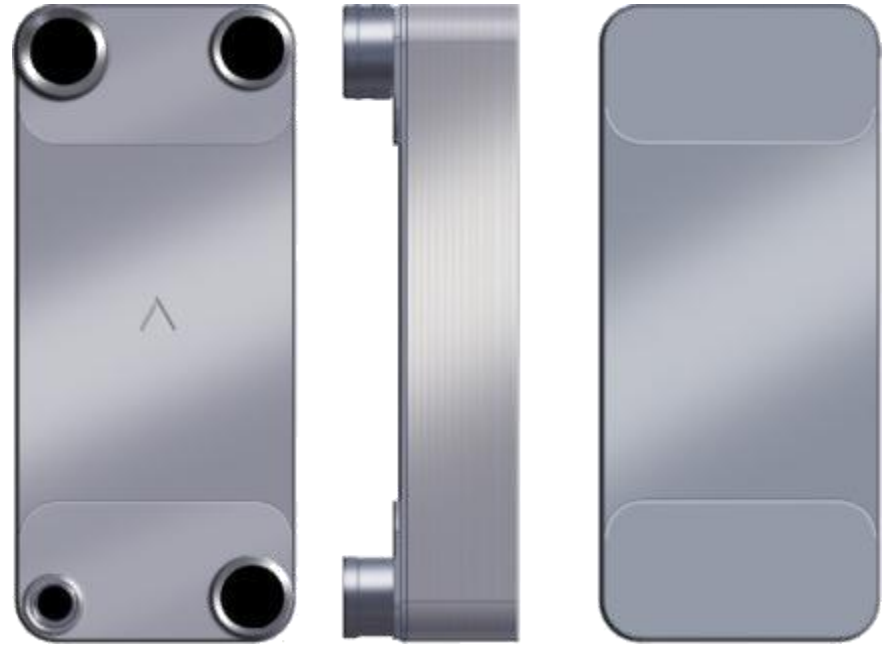


S400T

Ex. **S**400THx20/1P-SC-S

VH-type

- R407C HE



VH400T

Ex. **VH**400THx20/1P-SC-S

F-type

- Customer req.
- R410A
- Kyoto protocol

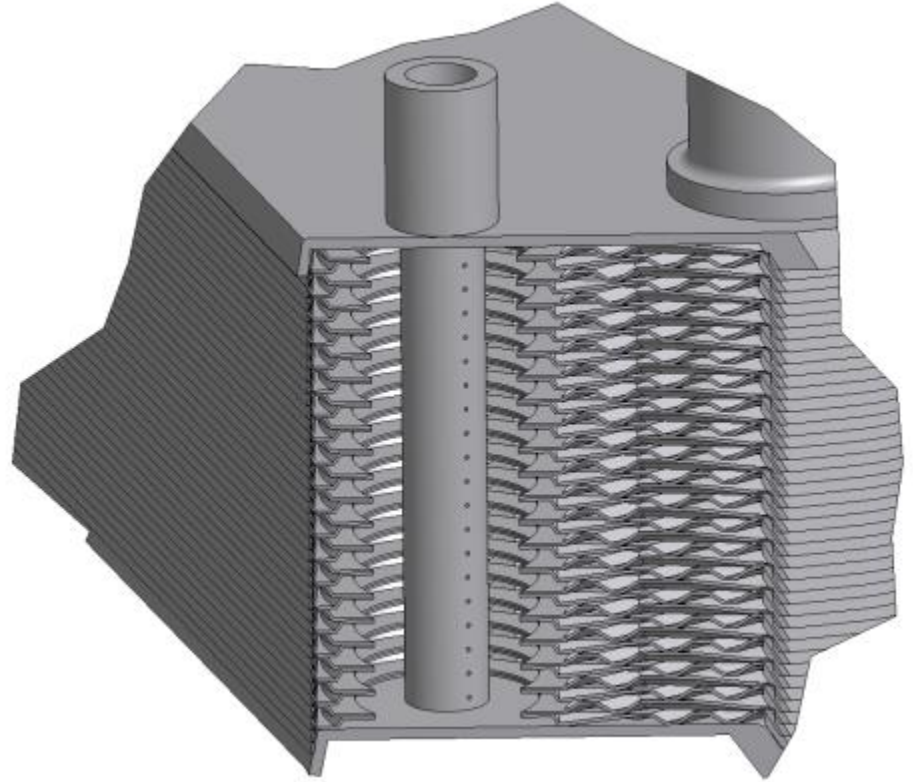


F80

Ex. **F**80Hx20/1P-SC-S

QA-type

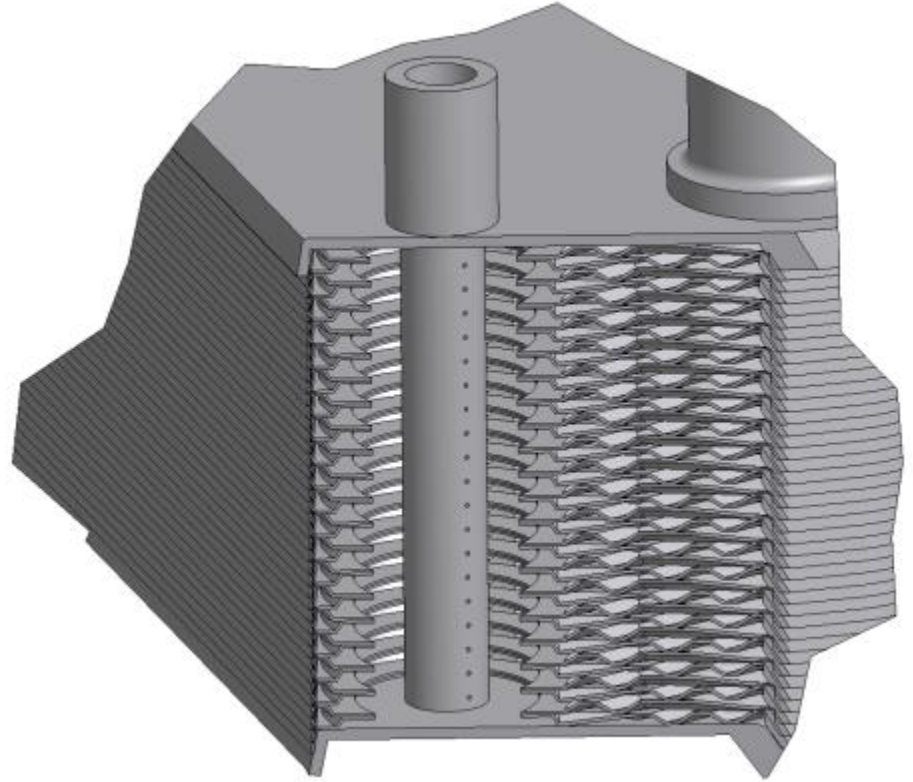
- Connection pipe
- 2-4 kW/m²



Ex. **QA**80Hx46/1P-SC-S

QB-type

- Connection pipe
- 4-6 kW/m²



Ex. **QB**80Hx46/1P-SC-S

E-type

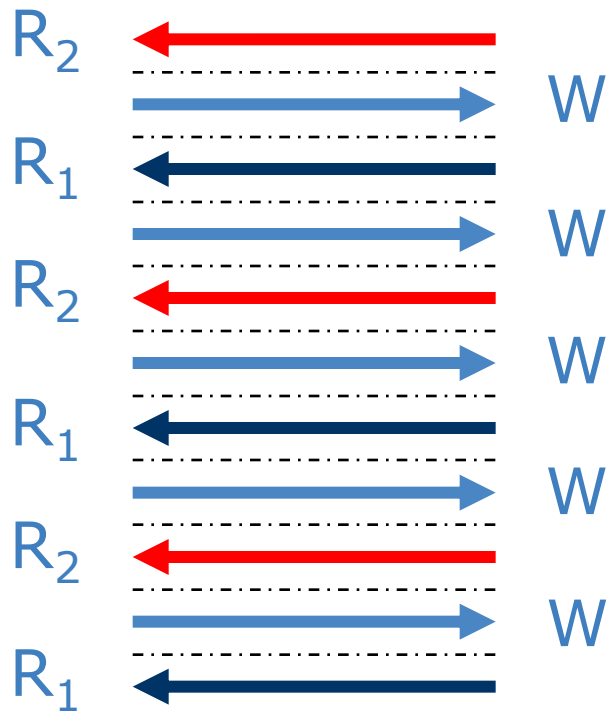
- Economy
- 100 %
- Volumes



Ex. **E**5THx14/1P-SC-S

D-type (True dual)

- Part load/Full load



Ex. **D**P400Hx202/1P-SC-S

M-type (Minex)

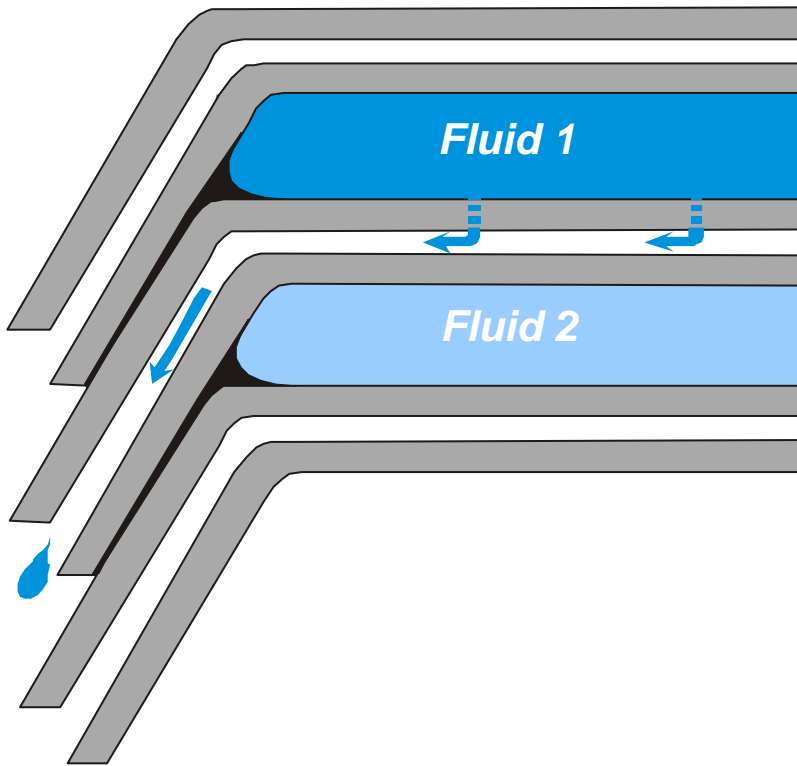
- Hybrid
- Gaskets
- Connections
- Spare parts



Ex. **M**10Hx20/1P-CTN-S

Double Wall

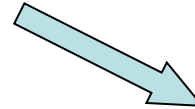
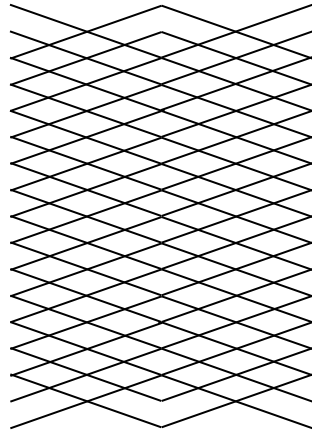
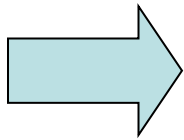
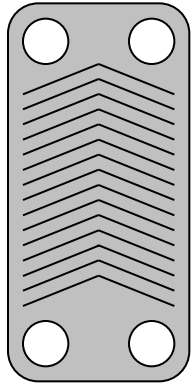
Leakage detection



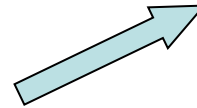
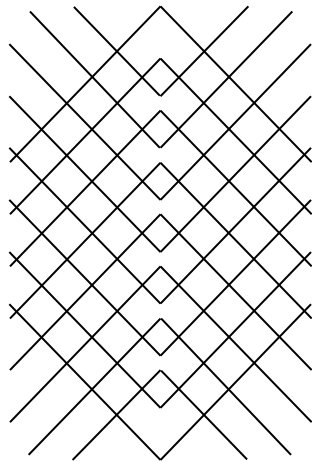
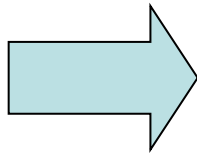
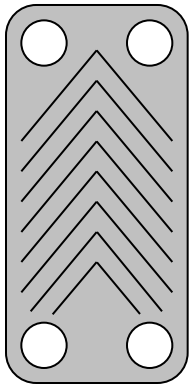
Ex. **B16DW**x20/1P-SC-S

Channel Plate Patterns

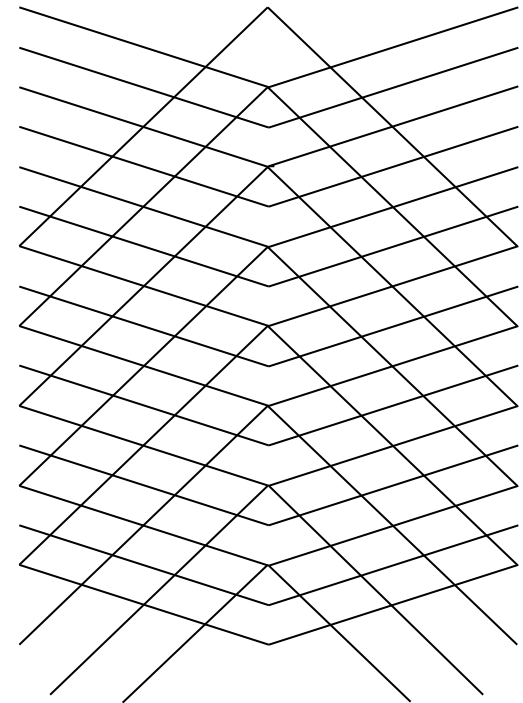
High theta



Low theta



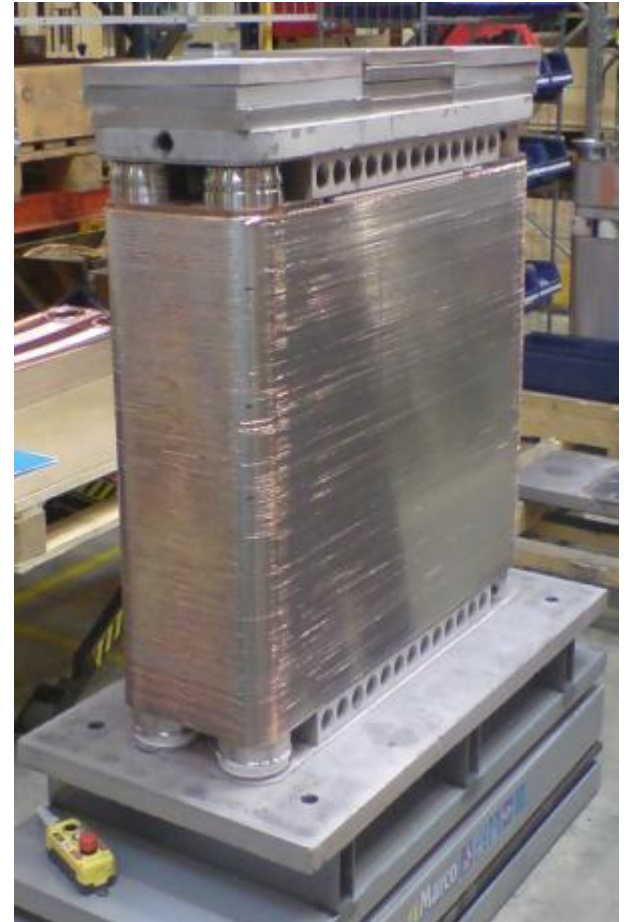
Mixed
(Low + High)



Ex. B25T**H**x20/1P-SC-S

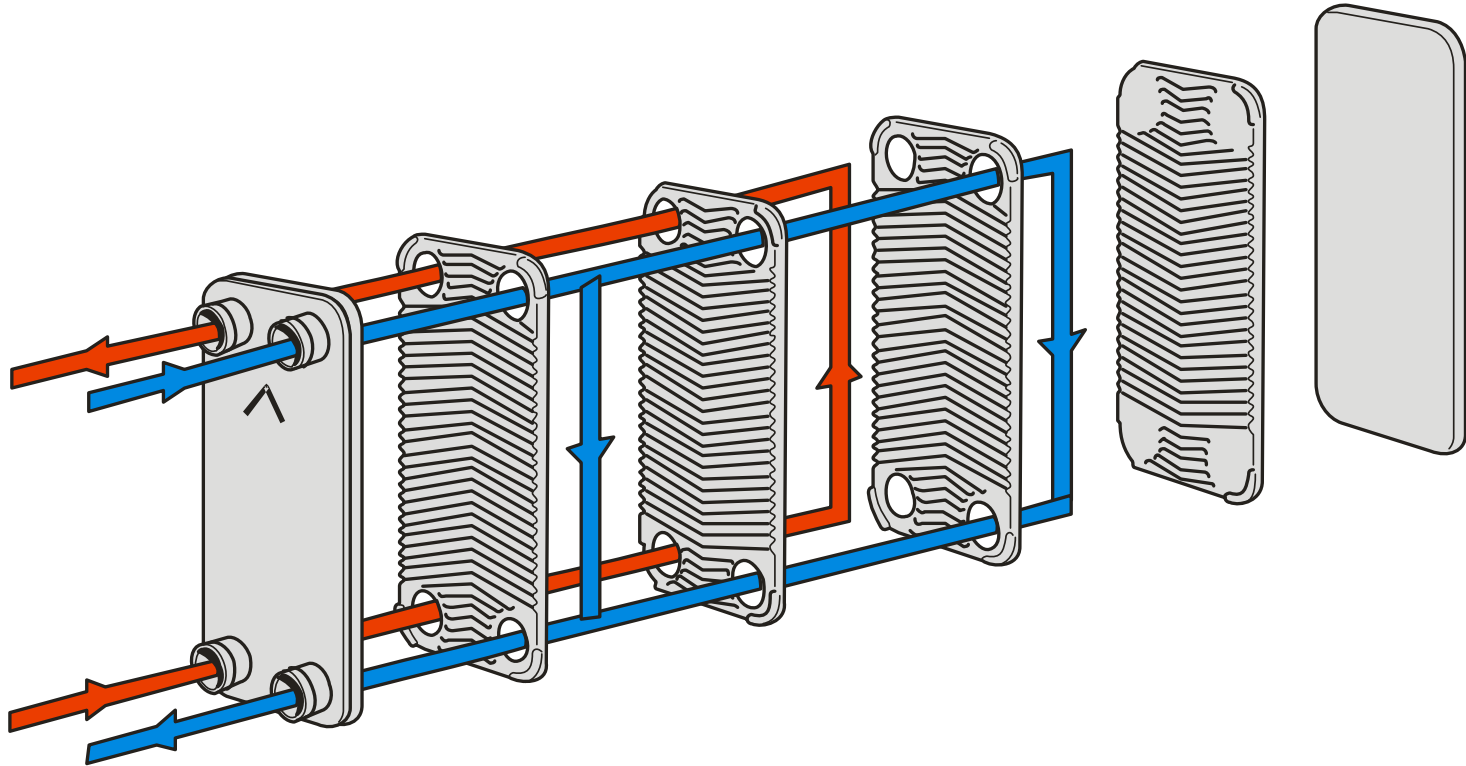
Number of Plates (NoP)

- Application
- Production
- 4–361 plates



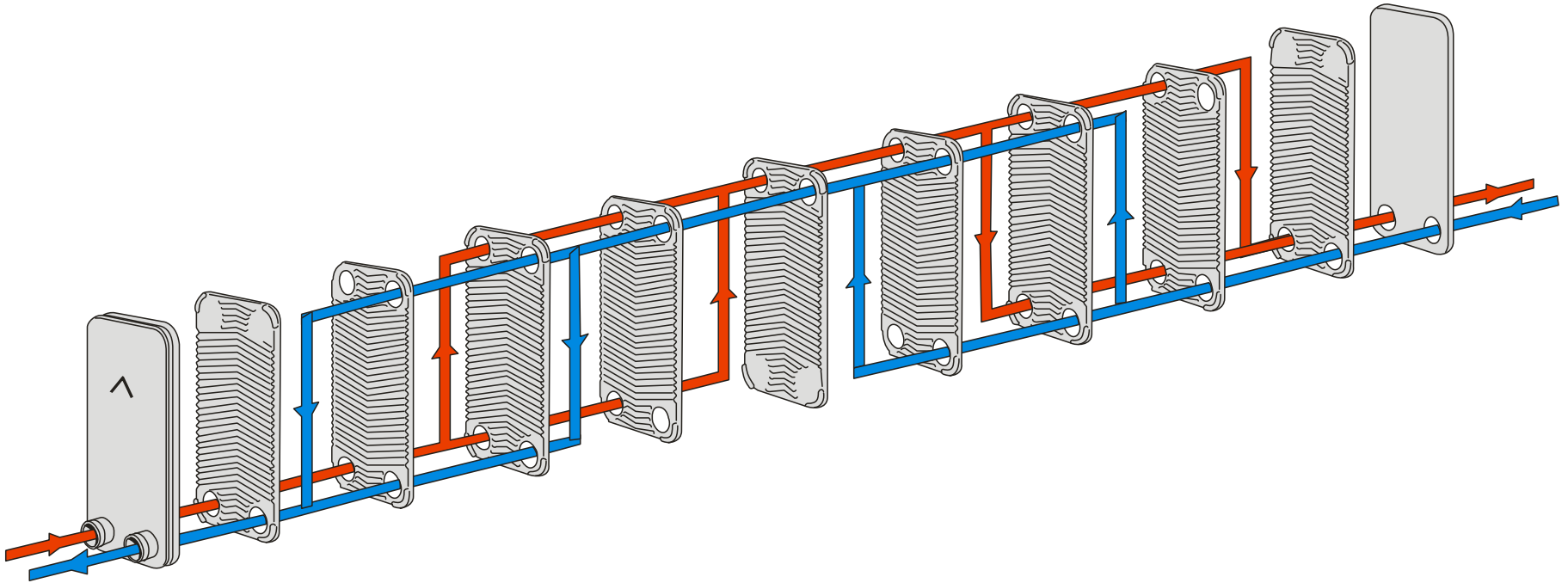
Ex. DS400H**x202**/1P-SC-S

One-pass



Ex. B400THx20/**1P**-SC-S

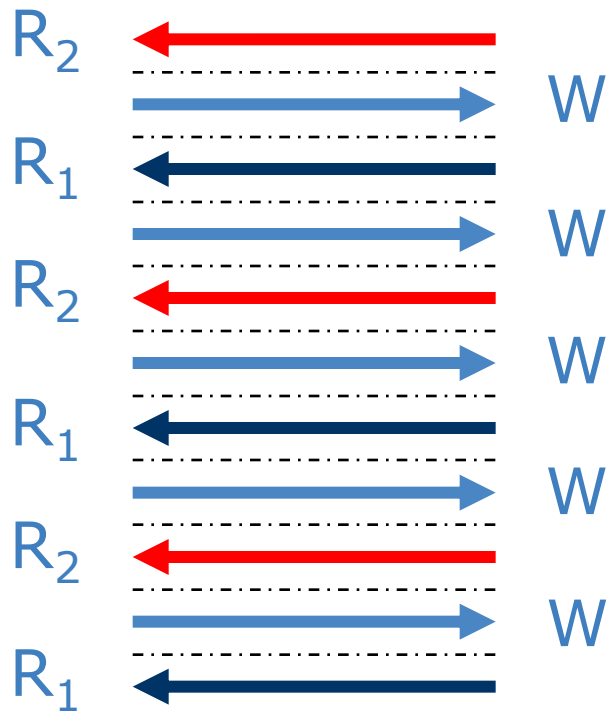
Two-pass



Ex. B200THx200/**2P**-SC-S

D-type (True dual)

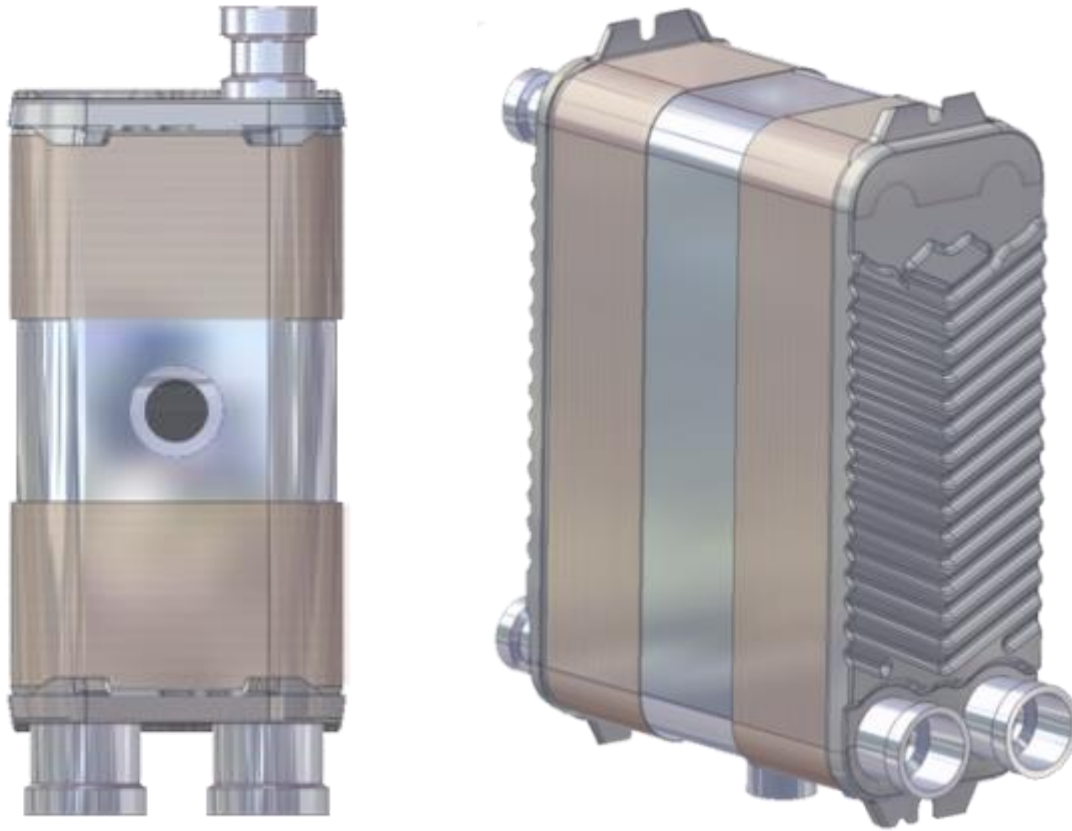
- Part load/Full load



Ex. **D**P400Hx202/1P-SC-S

ADWIS

Air Dryer With Integrated Separator



Ex. E5THx10x19/**ADWIS**-SC-S

Materials



Channel plates

Corner plates

316L/304S

Ex. DP400Hx202/1P-**S**C-S

Brazing Material



Copper



Nickel

Ex. DP400Hx202/1P-SC-S

Design Pressure Std Range (PED)

- L - Designed for Low pressure applications. Less or no cover plates.
- S -Standard 31 bar for 155°C - The rules for maximum allowable working pressure is that the burst pressure has to be 5 times higher.
- H- High 45 bar is for 155°C
- M - New pressure class
42 bar(130 °C): sizes 12/80/500T/439
45 bar(135°C): sizes 5/8/15/25T/120T/200T/400T/60
- U - An ordinary unit that is put between two carbon steel frames (30-40 mm) connected with bolts. This pressure class suitable in applications that uses CO₂ as new refrigerant. Pressure between 64-140 bar. 12, 16DW, 25T

Ranges – The Four Pillars

Single Phase	Condensers
Evaporators	Special Solutions

Port locations Front Side



Port locations BacksideSide



Connections / means P side

F3+F1+F2+F4 / P3+P1+P2+P4

4x1 1/2" / 22U+2x28U+16

4x1" HEX / 2x2" VIC+2xW76.1

/ 4xDN100C

Accessories

Accessories

H-Box | Insulation



This is used for fastening a pipeline from underneath. It is made of 23 different sizes of steel and is EPDM lined. The profile will allow you to install a PU or PU-H foam. The hole will be made in the same way as the hole in the wall and will be made in the same way.

SWEP
• 1990 •

Accessories

COSD | Connection for soldering



This is a welding connection consisting of a copper end, a steel end and a welding sleeve.

SWEP
• 1990 •

Accessories

CF | Compac flange kits



SWEP offers a wide range of Compact Flange PU to Steel or Steel to Steel (EPDM) for easy pressure welding a pipeline. Available in 1000Pa, EPDM is also available with a complete range of a complete set including a hot bulb, support ring, a complete set of a complete set. This product is not available in our Compact flange kits.

SWEP
• 1990 •

Accessories

REF | Insulation



SWEP offers a wide range of Compact Flange PU to Steel or Steel to Steel (EPDM) for easy pressure welding a pipeline. Available in 1000Pa, EPDM is also available with a complete range of a complete set including a hot bulb, support ring, a complete set of a complete set. This product is not available in our Compact flange kits.

SWEP
• 1990 •

Accessories

PU 50 | Insulation



SWEP offers a wide range of Compact Flange PU to Steel or Steel to Steel (EPDM) for easy pressure welding a pipeline. Available in 1000Pa, EPDM is also available with a complete range of a complete set including a hot bulb, support ring, a complete set of a complete set. This product is not available in our PU 50 insulation box for easy pressure welding.

SWEP
• 1990 •

Accessories

COWD | Connection for welding




This is a welding connection consisting of a copper end, a steel end and a welding sleeve.

SWEP
• 1990 •

Accessories

CF | Compac counter flanges



SWEP offers a wide range of Compact Flange PU to Steel or Steel to Steel (EPDM) for easy pressure welding a pipeline. Available in 1000Pa, EPDM is also available with a complete range of a complete set including a hot bulb, support ring, a complete set of a complete set. This product is not available in our Compact counter flange.

SWEP
• 1990 •

